

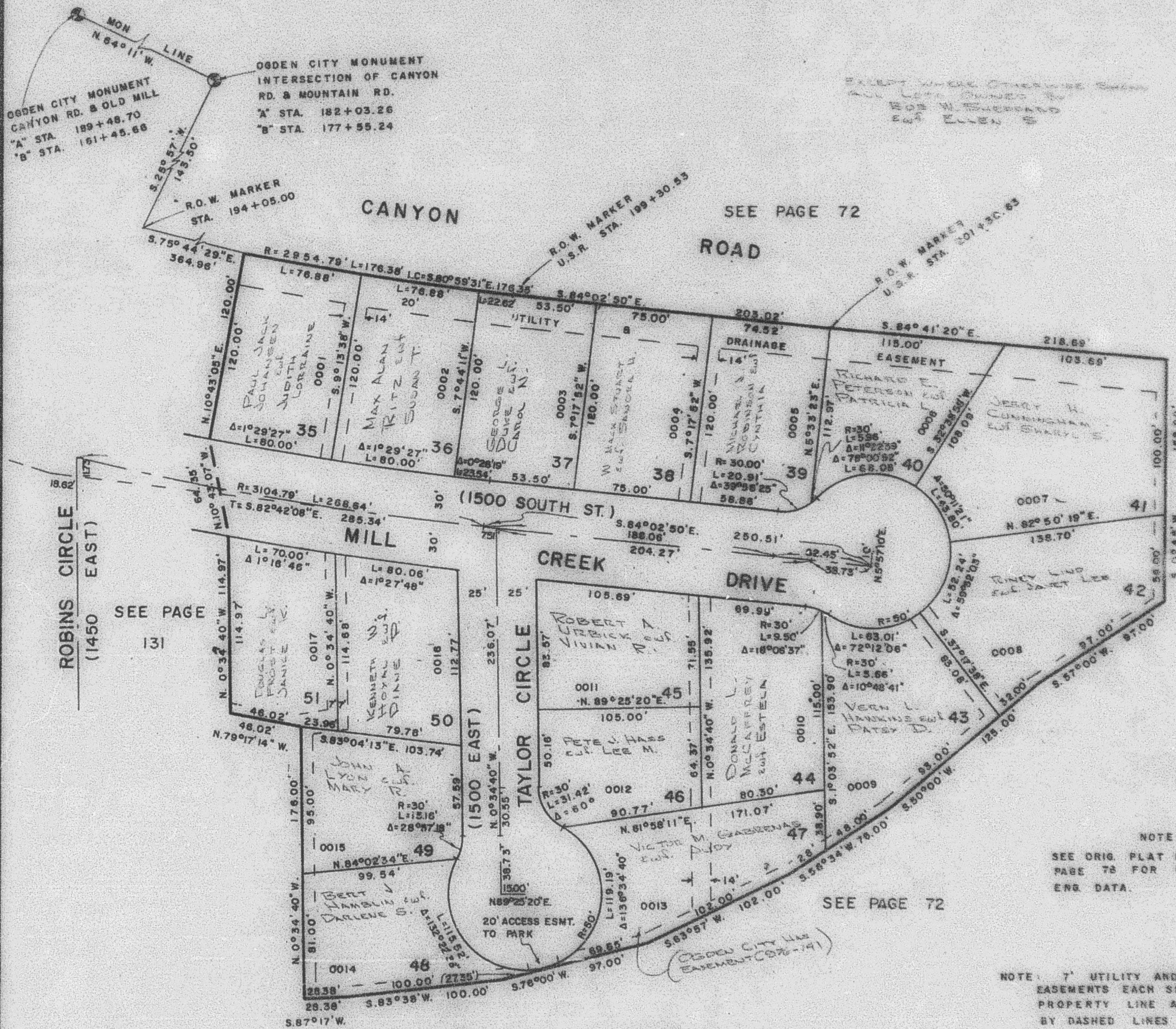
PART OF S.W. 1/4 OF SEC. 22, T.6N., R.1W., S.L.B.&M
ORCHARD PARK SUBDIVISION No 5

137

TAXING UNIT: 25

OGDEN CITY
 SCALE 1"=50'

PREFIX 13-137



EXCEPT WHERE OTHERWISE SHOWN
 ALL LOTS OWNED BY
 BOB WILSON AND
 ELLIEN S.

SEE PAGE
 71

SEE PAGE
 131

SEE PAGE 72